

MANUAL ALARM STATION R-Type

1MH2A / 1MK1A



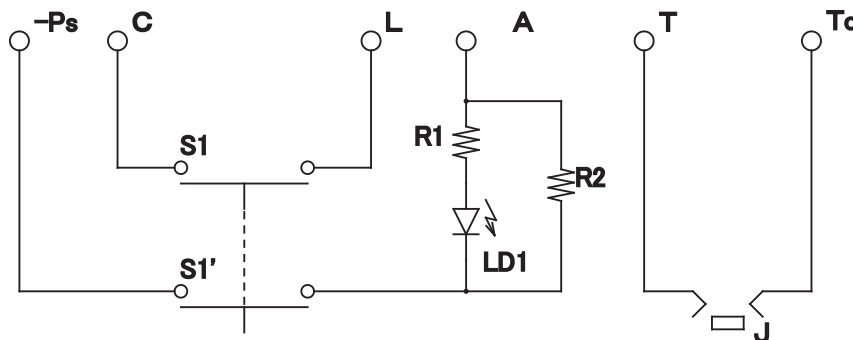
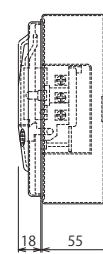
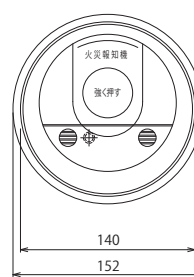
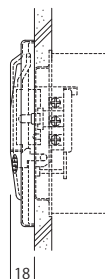
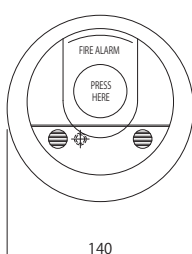
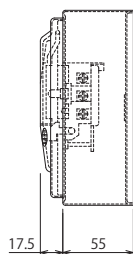
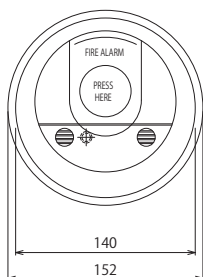
1MH2A with 1MI1-06



1MH2A



1MK1A with 1MI1-06
(Outdoor)



C: Common
L: Initiating zone
A: Answer indication
T: Telephone
J: Telephone jack
Tc: Telephone common
-Ps: Answer common

Specifications

Specifications	1MH2A	1MK1A
Class	Class 1	Class 1
Installation Location	Indoor	Outdoor
Telephone Jack	Available	
Contact Capacity	250 mA @ 30VDC	
Operation Lamp	Red LED	
Compatible Control Panel	NFU-7000	
Operating Temperature	-10°C to +50°C	-20°C to +70°C
Main Material	Flame-Retardant Resin	
Finish Color	Munsell 7R 4/13 (Red)	
Weight	200 g	250 g
Surface Mount Box	1MI1-06	
Recessed Mount Box	JIS C 8340	

Ordering Information

Model Name	Description
1MH2A	Manual Alarm Station, R-Type c/w Telephone Jack w/o Surface Mount Box
1MK1A	Manual Alarm Station Outdoor, R-Type, c/w Telephone Jack, w/o Surface Mount Box
1MI1-06	Surface Mount Box for Manual Alarm Station
PTL-1	Telephone Handset 1 unit
EVA-MiniIP	Mini Input Module